



Slimline Fun Fold Cards

May 12, 2022
www.SimplySimpleStamping.com



Stampin' Up! Supplies:

- **Stamps** – Good Feelings OR Dahlia Days
- **Paper** – Gorgeous Grape, Fresh Freesia, Basic White Perfectly Penciled Designer Series Paper OR Calypso Coral, Basic White
- **Ink** – Memento Tuxedo Black, Fresh Freesia Stampin' Blends OR Polished Pink, Parakeet Party, Daffodil Delight, Calypso Coral
- **Other** – Paper Trimmer OR Simply Scored Board, Bone Folder, Adhesive, Detailed Dahlias dies, Open Weave Ribbon – Fresh Freesia OR Polished Pink

Cutting & Scoring:

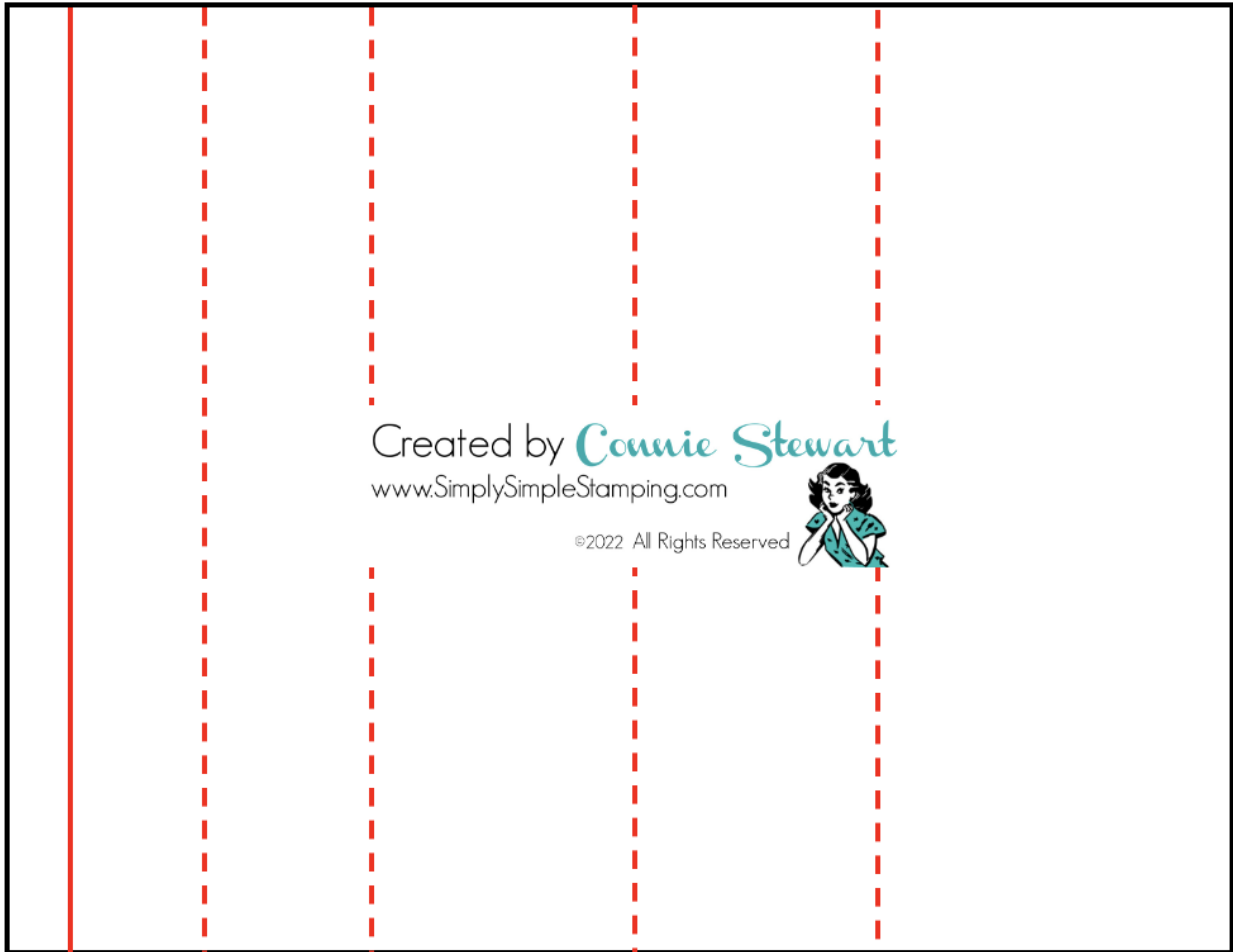
- **Gorgeous Grape OR Calypso Coral:** 8 ½" x 11" (See diagram below)
- **Designer Series Paper OR Basic White:** 7" x 8 ¼"
- **Fresh Freesia OR Basic White:** 3" x 8 ¼"
- **Fresh Freesia:** 3" x 4" and **Basic White:** 2 ¾" x 3 ¾" **OR Basic White:** 2 ¼" x 3 ¾"

Cutting & Scoring Diagram - 8 1/2" x 11"

- Cut off 3/4" x 8 1/2" (this will be the Belly Band)
- With the 10 1/4" at the top, score at 1 1/4", 2 1/2", 4 3/4" and 7"

Score at 1 1/4" 2 1/2" 4 3/4" 7"

Cut off 3/4" x 8 1/2"



Created by *Connie Stewart*
www.SimpleSimpleStamping.com

©2022 All Rights Reserved



Created by *Connie Stewart*
www.SimpleSimpleStamping.com

©2022 All Rights Reserved

