

# Graduation Money Holders

June 1, 2023

[www.SimplySimpleStamping.com](http://www.SimplySimpleStamping.com)



## Stampin' Up! Supplies:

- **Stamps:** Classic Letters, Charming Sentiments
- **Paper:** Basic White Thick, Cherry Cobbler, Basic Black, Basic White
- **Ink:** Cherry Cobbler, Stampin' Blends Cherry Cobbler (dark), Memento Black
- **Other:** Punches: 1 3/4" Circle and 2" Circle, Stampin' Pierce Mat, Round & Square Brads, Baker's Twine Essentials (white), Stampin' Dimensionals, Classic Matte Dots, Tear & Tape, Embossing Folders: Quatrefoil **OR** Exposed Brick

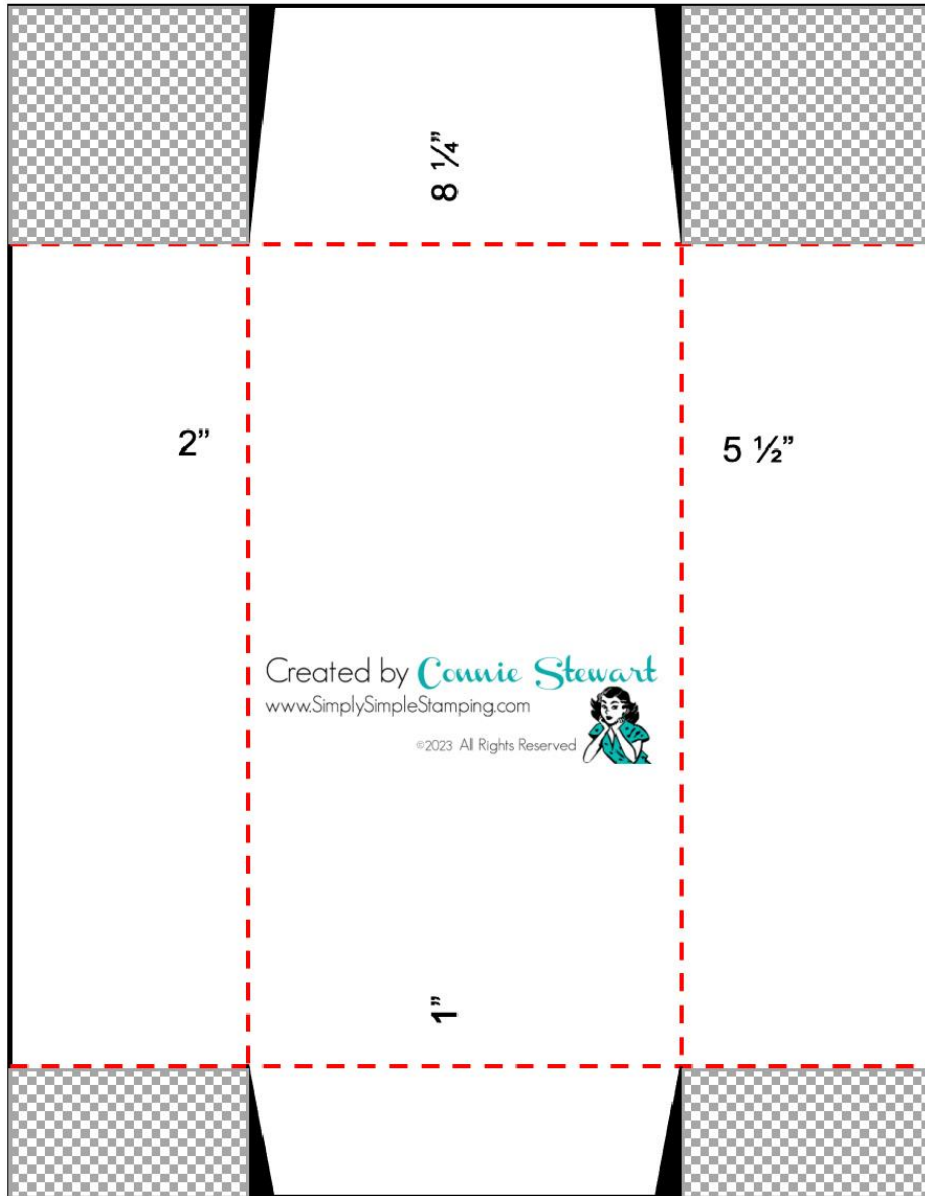
- **Basic White Thick:** 7" x 8 1/2", with the 8 1/2" at the top, score at 2" and 5 1/4"
- **Basic White:** 1 1/4" x 6 3/4"
  - 1 3/4" x 2 1/4" (2 letters) or 1 3/4" x 3 1/4" (3 letters)
  - 1 3/4" circle punch
- **Cherry Cobbler:** 3" x 6 3/4"
  - (2) 1 3/4" x 2 1/8"
  - 7 1/2" x 9 3/4" (see diagram below)
- **Basic Black:** 1 1/2" x 6 3/4"
  - 1 1/4" x 1 1/4"
  - 1" x 2"
  - 2" circle punch



7 1/2"

# Envelope

9 3/4"



8 1/4"

2"

5 1/2"

Created by *Connie Stewart*  
[www.SimplySimpleStamping.com](http://www.SimplySimpleStamping.com)

©2023 All Rights Reserved



1"